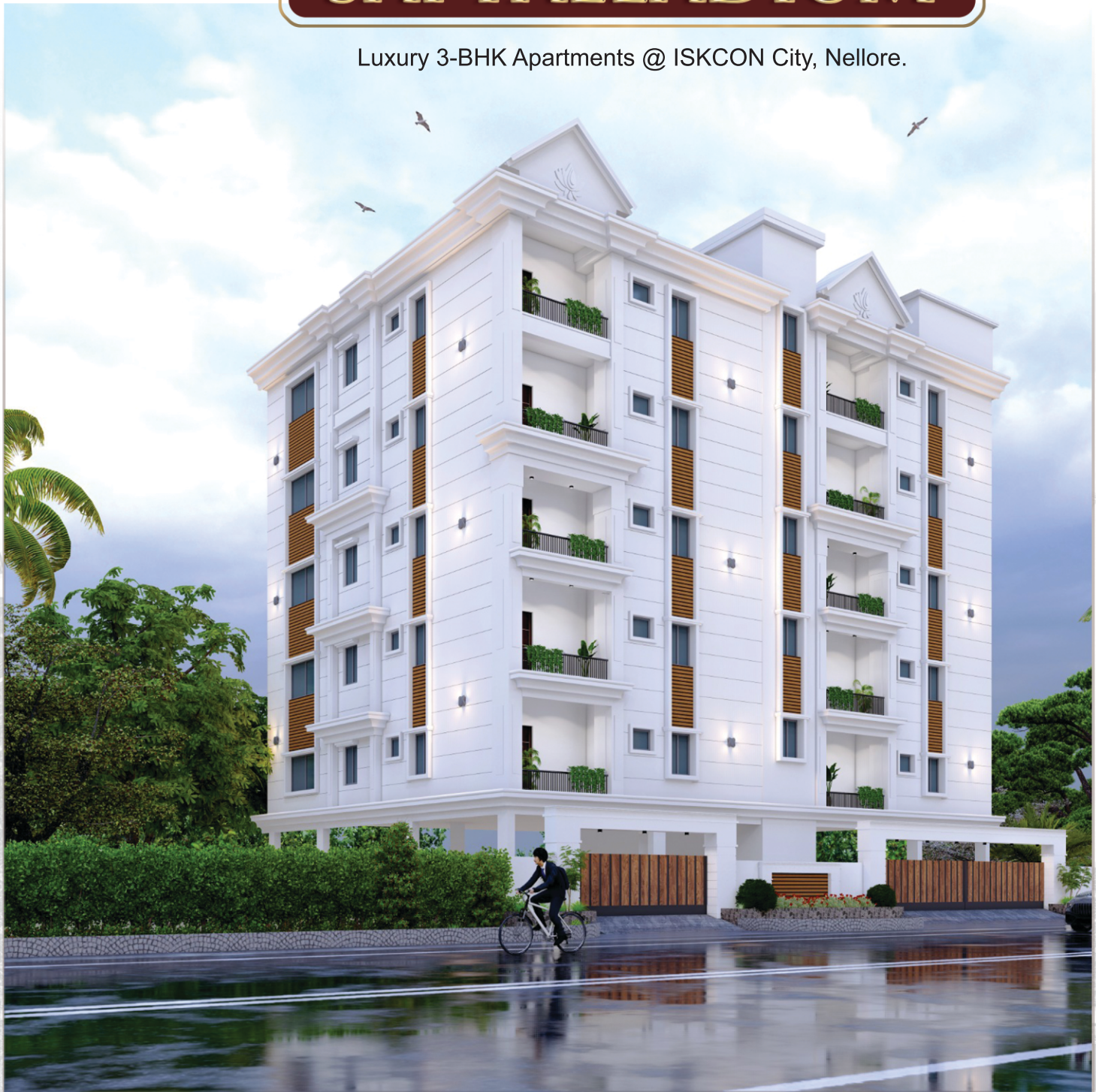


A Venture by :



# SAI PALLADIUM

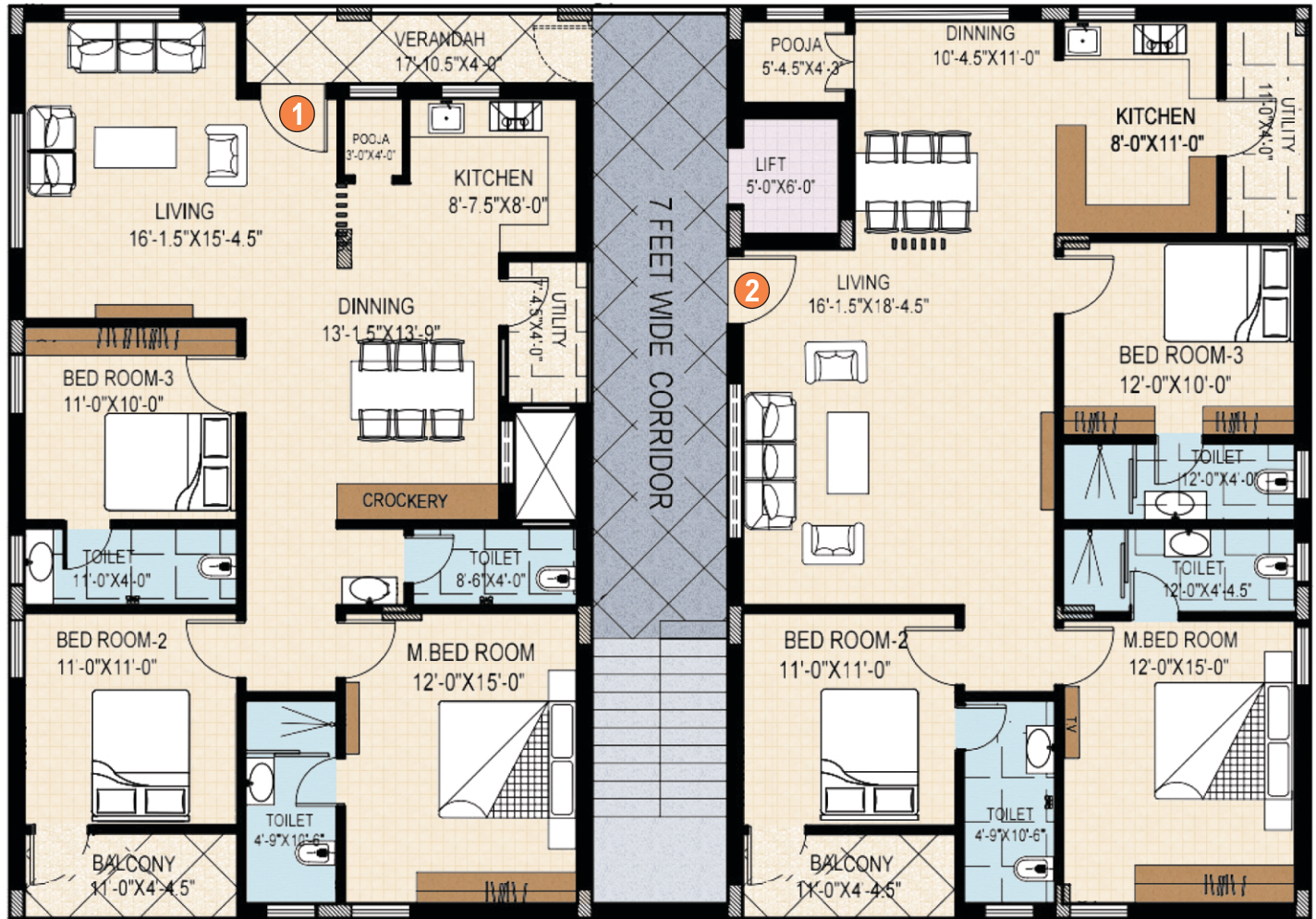
Luxury 3-BHK Apartments @ ISKCON City, Nellore.



"Building Your Vision with Precision and Care"



● TYPICAL FLOOR PLAN



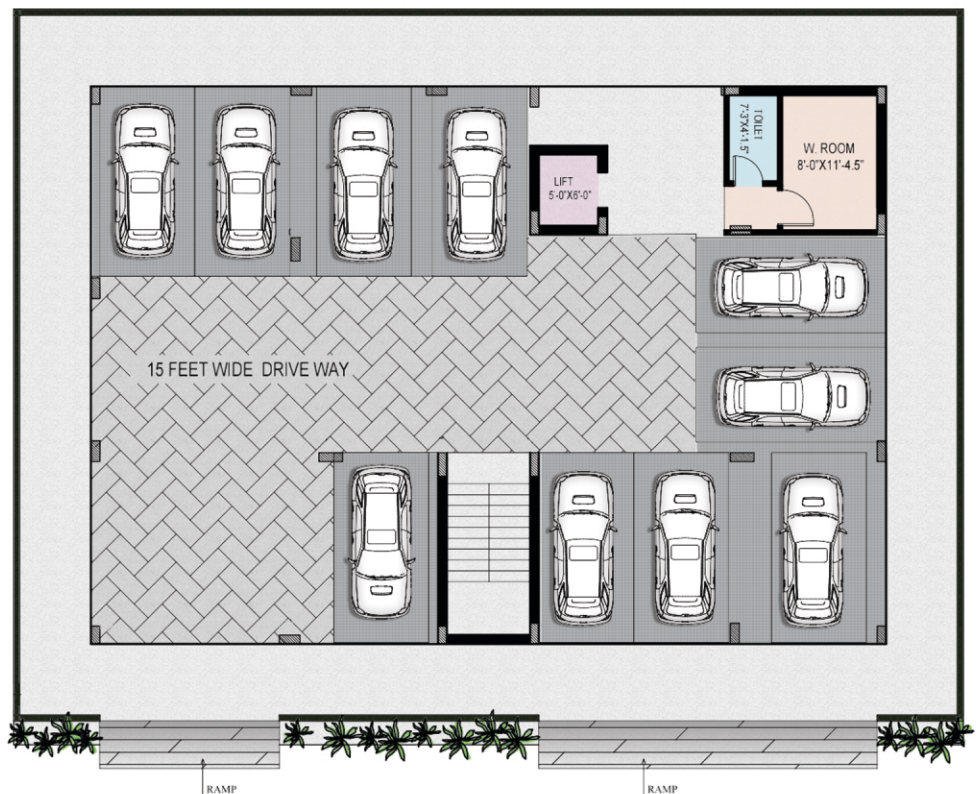
Area Statement :

**1 1800.00 Sft**

3-BHK EAST FACE

**2 1800.00 Sft**

3-BHK NORTH FACE



PARKING FLOOR PLAN



## SPECIFICATIONS

### STRUCTURE

R.C.C. Framed Structure with Vizag & Cell Tiger Steel, Ultratech & Bharathi Cement.

### SUPER STRUCTURE

High density ISI light weight bricks 9" & 4".

### DOORS

Main Door : Ballharsha Teak wood frame and door.

Bedroom Doors : Granite frame and Flush doors.

Bathroom Doors : Granite frame and WPVC doors.

### WINDOWS

Three track sliding UPVC windows with MS safety grills and glass.

### WALL FINISH

With sponge finish inside & outside.

### KITCHEN

Z Black Granite stone platform with 3'0" height glazed ceramic tiles dadoing, with steel sink.

### DINING

Provided one wash-basin at dining area.

### FLOORING

Vitrified floor tiles of 800 x 1600 mm size.

### TOILETS

Ceramic flooring with door height ceramic tiles dado with all European Commodes, Shower, Hot & Cold mixer with geyser provision and good quality CP fittings.

### PLUMBING

Grohe / Jaguar fittings,

Water lines CPVC Standard ISI make & PVC pipes of standard make.

### PAINTING

Lappum finishing with Emulsion paints for all interior walls.

Outside walls Water -Proof paint for elevation side of Asian / equivalent.

### ELECTRICAL

Concealed copper wiring of Polycab / equivalent make and adequate number of points with Legrand Modular Switches.

Cable wiring for every flat.

### LIFT

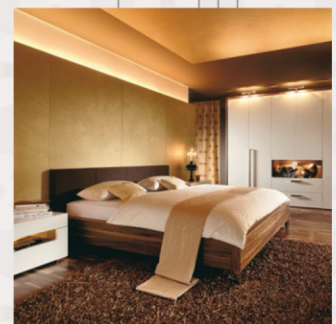
Standard make 6 Passenger Lift.

### GENERATOR

Power back-up standard make generator for lift, corridors and common area lights.

### SECURITY

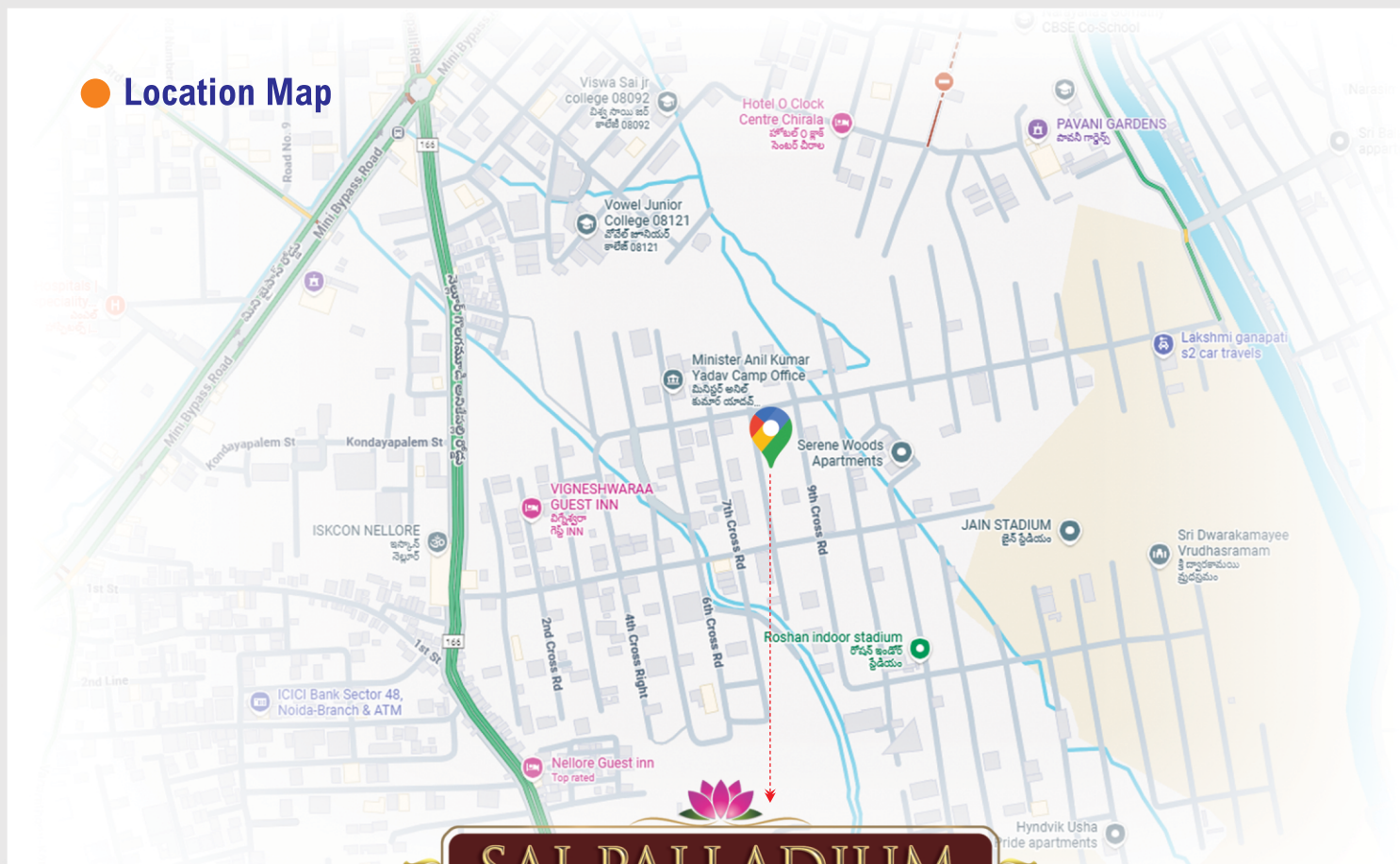
CCTV Surveillance cameras 24/7.



### AMENITIES:

- Car parking
- Power Back-up
- Guest Room
- Water Softener
- CC Cameras
- Municipal water Connection
- EV Charging points in all Parking slots
- Spacious and Elegant 11 feet height Slabs

## Location Map



# SAI PALLADIUM



Scan this QR code for Location

Promoters :



HYDERABAD | GUNTUR | NELLORE

Contact:

8125822251 / 9951717456 / 9030842763

[www.ssvprojectz.com](http://www.ssvprojectz.com)

NOTE : This brochure is only a conceptual presentation of the project and not a legal offering. The promoters reserve the right to make changes in Elevation, Plans & Specification as deemed fit.